



VERBLENDKLINKER
FACING BRICKS



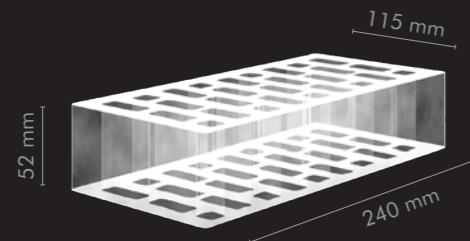
FORMATE

SIZES OF FACING BRICKS

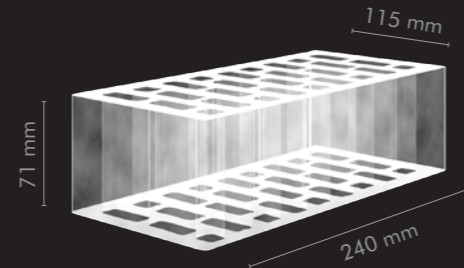
FORMSTEINE

SHAPED BRICKS

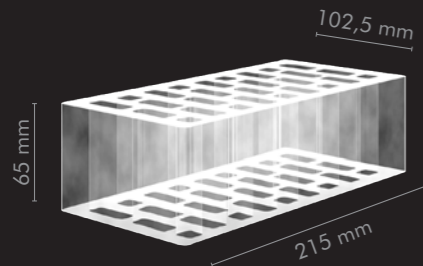
DF DÜNNFORMAT
DF THIN SIZE



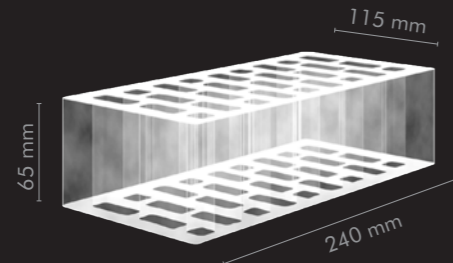
NF NORMALFORMAT
NF NORMAL SIZE



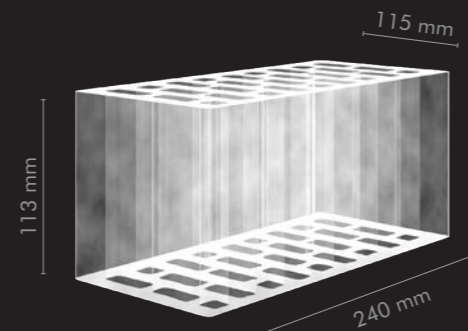
WDF WAALDICKFORMAT
WDF WAAL THICK SIZE



RF REICHIFORMAT
RF IMPERIAL SIZE



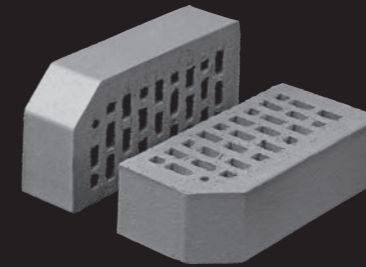
2DF DOPPELTES DÜNNFORMAT
2DF DOUBLE THIN SIZE



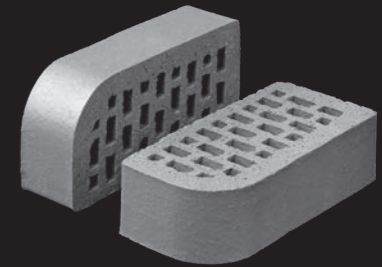
VERBLENDKLINKER FACING BRICKS	Format Size	Bedarf Stück je m ² Pieces per sqm
NF	240 x 115 x 71 mm	ca. 48
DF	240 x 115 x 52 mm	ca. 64
WDF	215 x 102,5 x 65 mm	ca. 60
RF	240 x 115 x 65 mm	ca. 54
2DF	240 x 115 x 113 mm	ca. 32

Alle angegebenen Bedarfszahlen beziehen sich auf eine Fugenbreite von 10 bis 12 mm.
All stated figures refer to a grouting width of 10-12 mm.

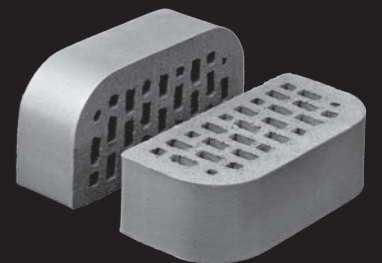
Nr. 1



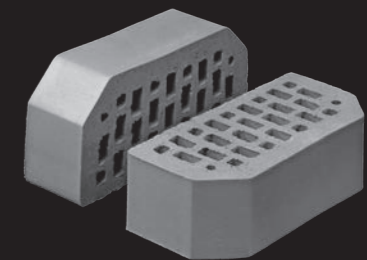
Nr. 6



Nr. 15



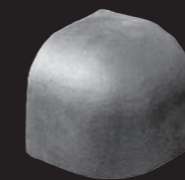
Nr. 16



Mit ihrer langen Tradition setzen Formsteine architektonische Akzente, erfüllen gleichzeitig aber auch konstruktive Funktionen. Formziegel beeinflussen die Architektur des gesamten Hauses. So wirken z.B. strenge 90°-Winkel durch abgeschrägte oder abgerundete Ecken weicher. Innen- und Außenwinkel unterbrechen gradlinige Flächen. Und während einige Formziegel einen überwiegend dekorativen Charakter bei der Gestaltung von Gesimsen oder Stürzen haben, steht bei anderen die praktische Anwendung im Vordergrund. Passend zu unserem umfangreichen Produktprogramm der rechtwinkligen Verblendklinker bieten wir Ihnen diese „Klinker in Bestform“ für individuelle Detaillösungen – wie und wo auch immer sie zum Einsatz kommen.

Shaped bricks have a long tradition in setting architectural accents, while at the same time fulfilling constructive functions. Shaped bricks influence the architecture of the entire house. Harsh 90° angles, for example, appear much softer when corners are bevelled or rounded. Internal and external angles break up straight-lined surfaces. And, while some shaped bricks have a predominantly decorative character when designing cornices or lintels, the practical implementation is the focus for others. To match our extensive product range of rectangular bricks, we offer you these „bricks on top form“ for individual detailed solutions - however and wherever they are used.

Nr. 32



Sonderformsteine auf Anfrage.
Special shaped bricks on request.



K 706 NF



K 706 DF



K 748 NF



K 748 NF



K 745 NF



K 745 NF



K 747 NF



K 747 NF



K 746 NF



K 746 NF



K 750 NF



K 750 NF



K 769 NF



K 752 NF



K 752 NF



K 752 DF

Die Abbildungen zeigen unverbindliche Durchschnittsmuster.
The images show non-binding average samples.





K 706 NF

K 706 DF



K 745 NF

K 745 NF



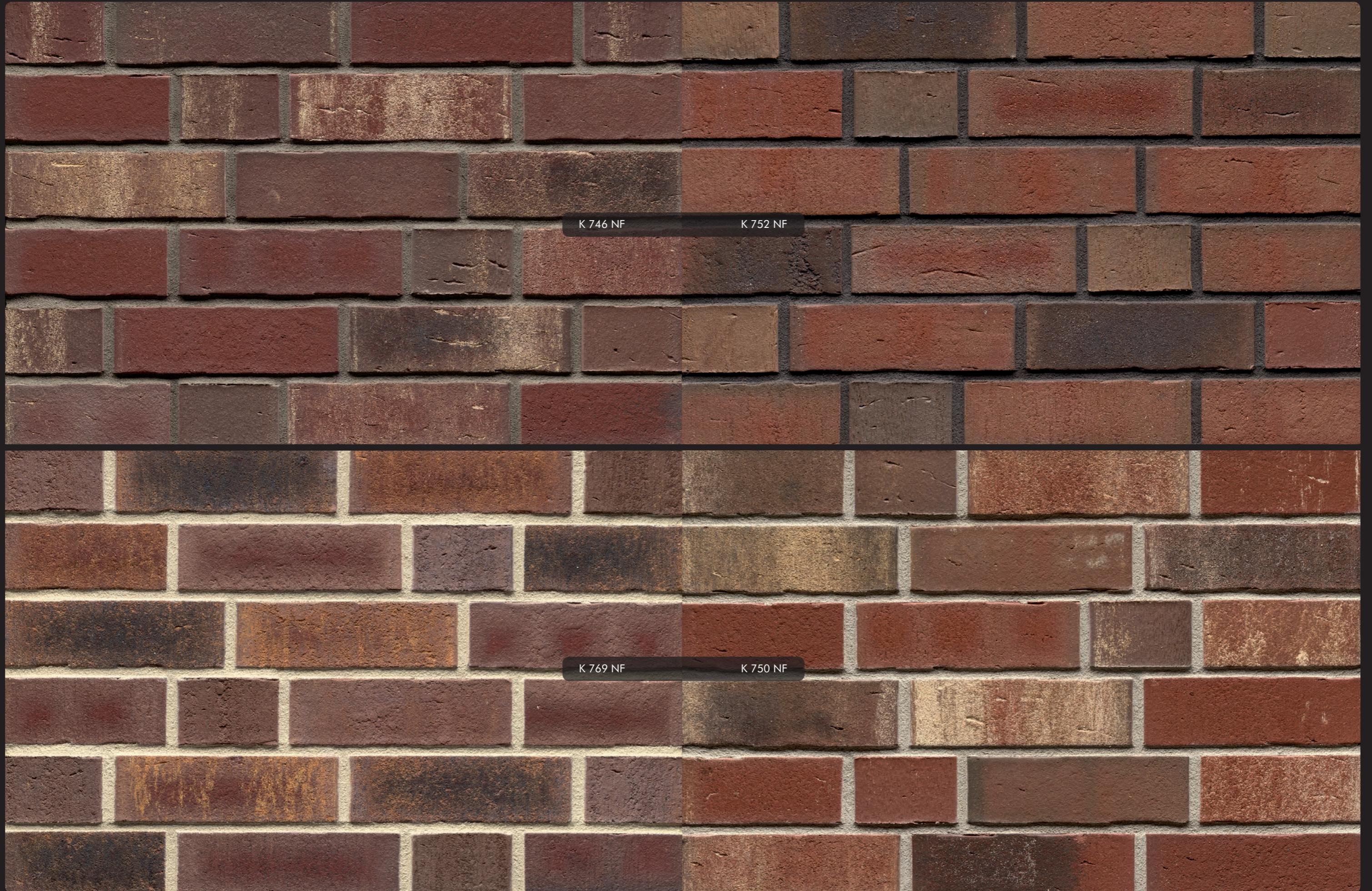


K 748 NF

K 748 NF

K 747 NF

K 747 NF



K 746 NF

K 752 NF

K 769 NF

K 750 NF



K 775 NF



K 775 NF



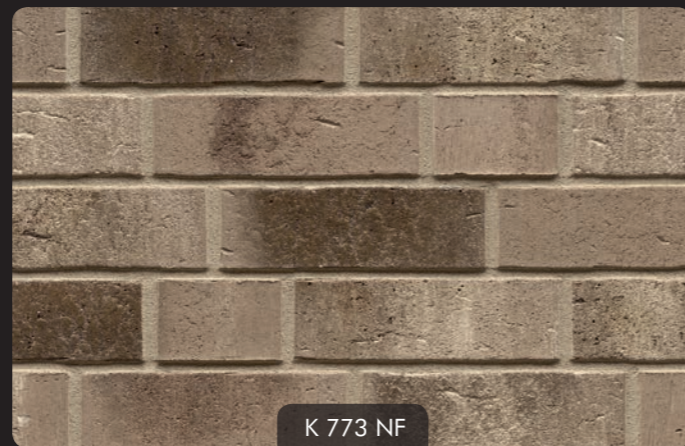
K 764 NF



K 764 DF



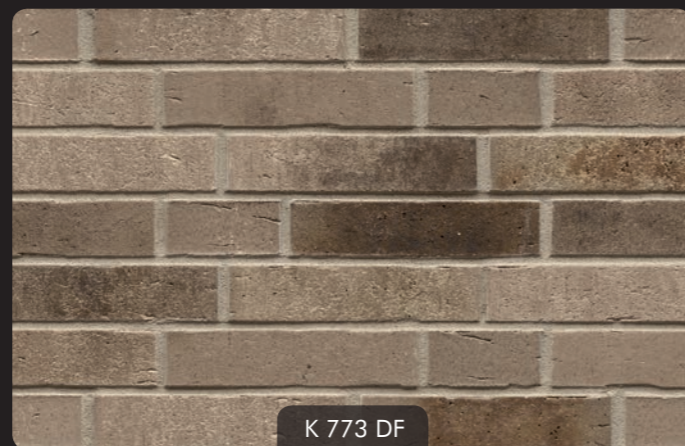
K 773 NF



K 773 NF



K 773 DF



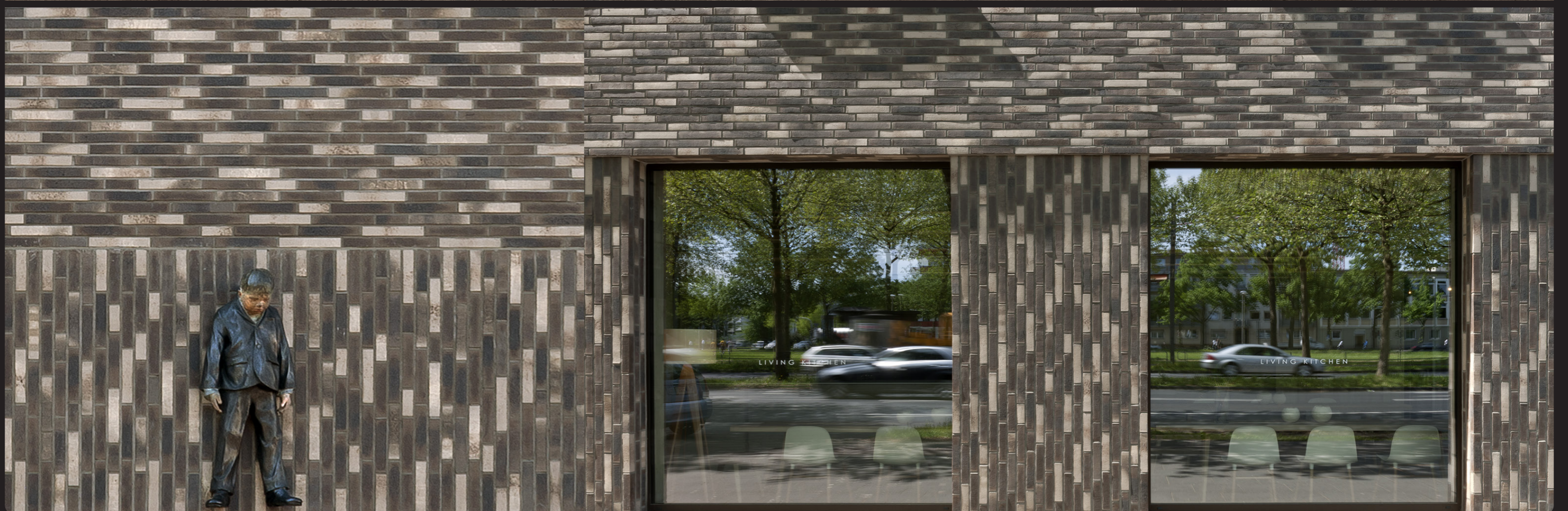
K 773 DF





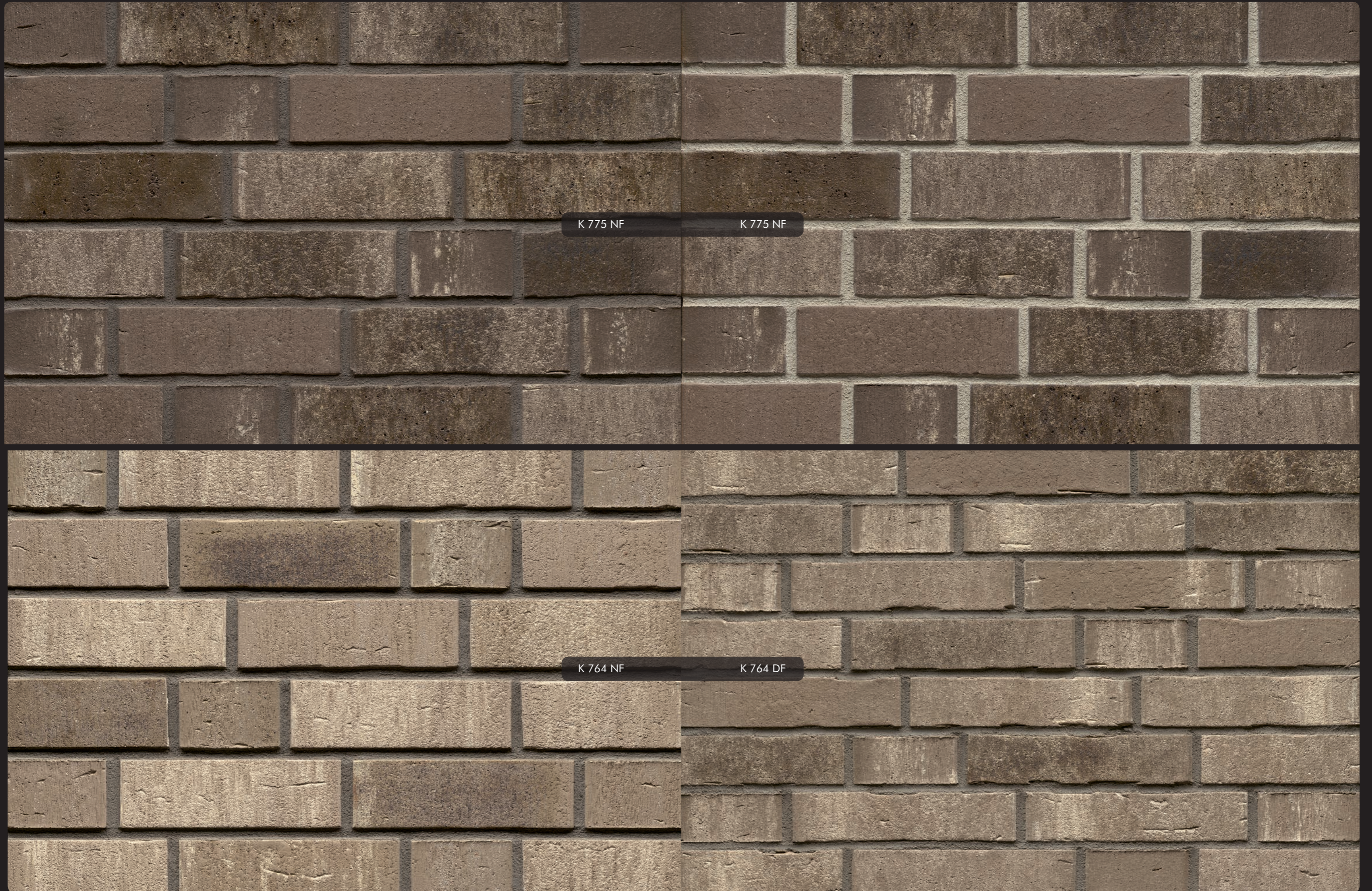
K 773 NF

K 773 DF



LIVING KITCHEN

LIVING KITCHEN



K 775 NF

K 775 NF

K 764 NF

K 764 DF



STARBUCKS

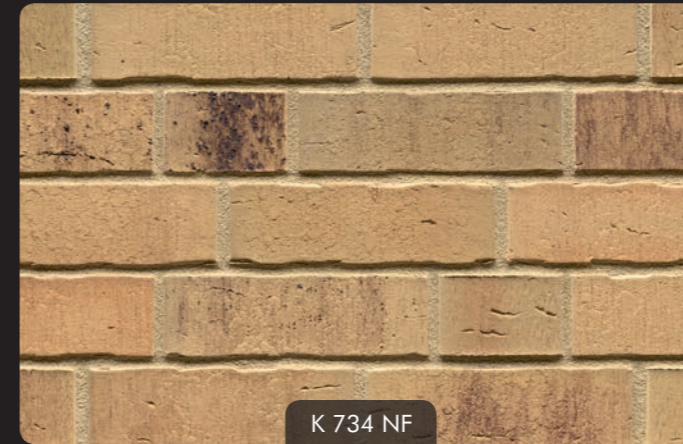
VASCU



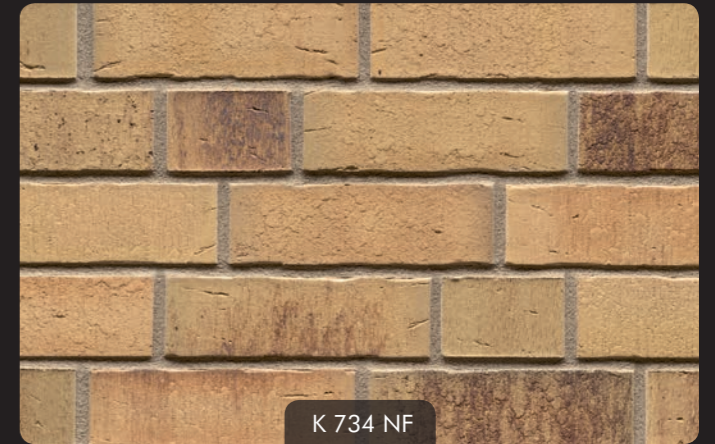
K 723 NF



K 724 NF



K 734 NF



K 734 NF



K 732 NF



K 741 NF



K 762 NF



K 762 NF

Die Abbildungen zeigen unverbindliche Durchschnittsmuster.
The images show non-binding average samples.





K 723 NF

K 724 NF



K 732 NF

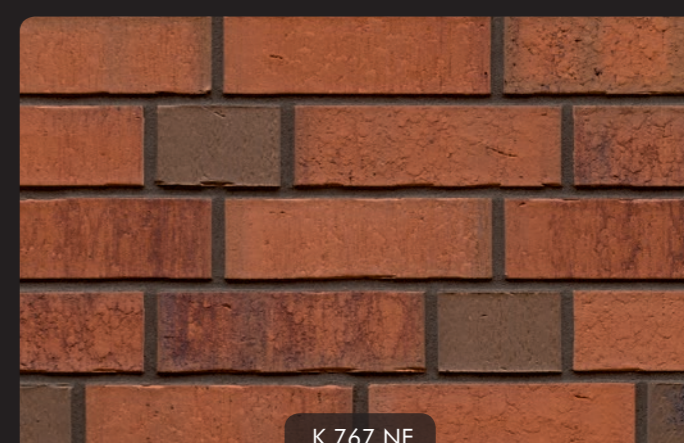
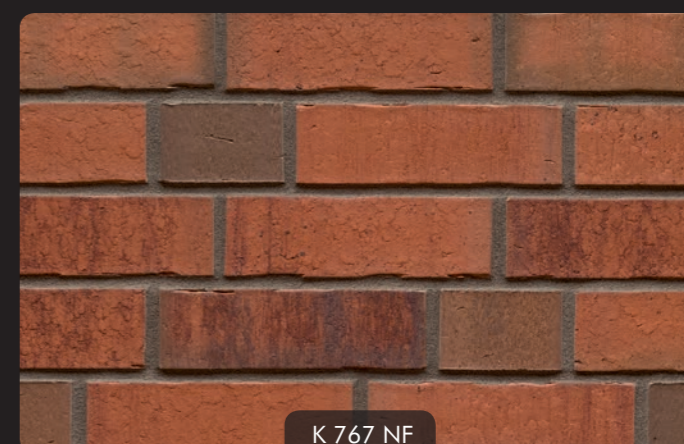
K 741 NF



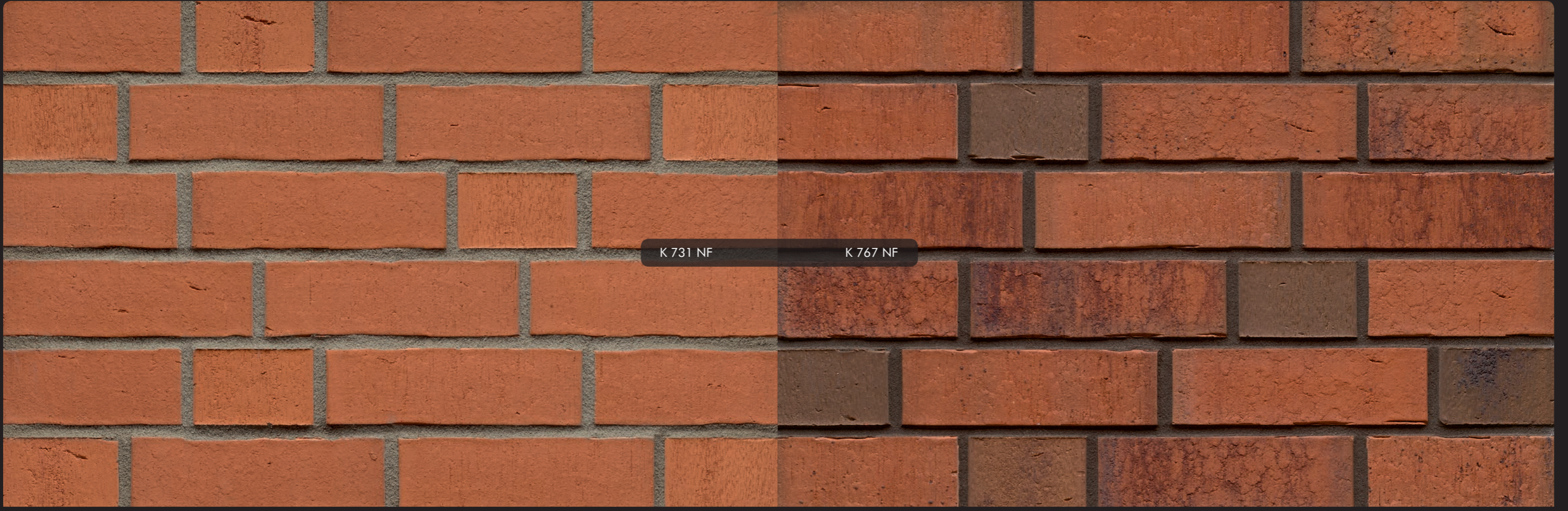
K 734 NF

K 762 NF





Die Abbildungen zeigen unverbindliche Durchschnittsmuster.
The images show non-binding average samples.





K 662 DF



K 662 NF



K 617 NF



K 661 NF





K 662 DF

K 662 NF

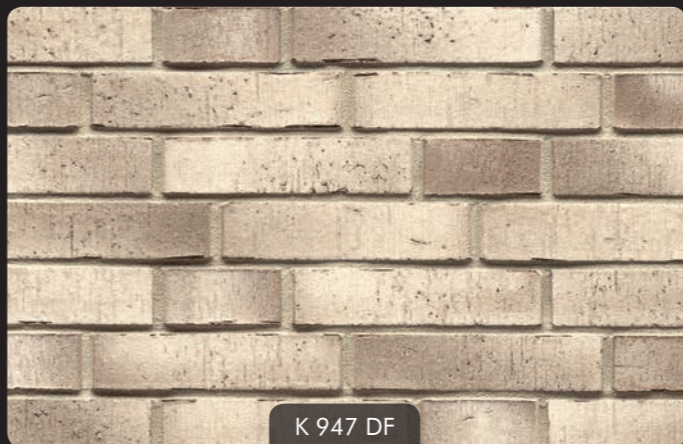


K 617 NF

K 661 NF



VARIO



Die Abbildungen zeigen unverbindliche Durchschnittsmuster.
The images show non-binding average samples.



K 915 DF

K 919 DF



K 914 DF

K 911 DF

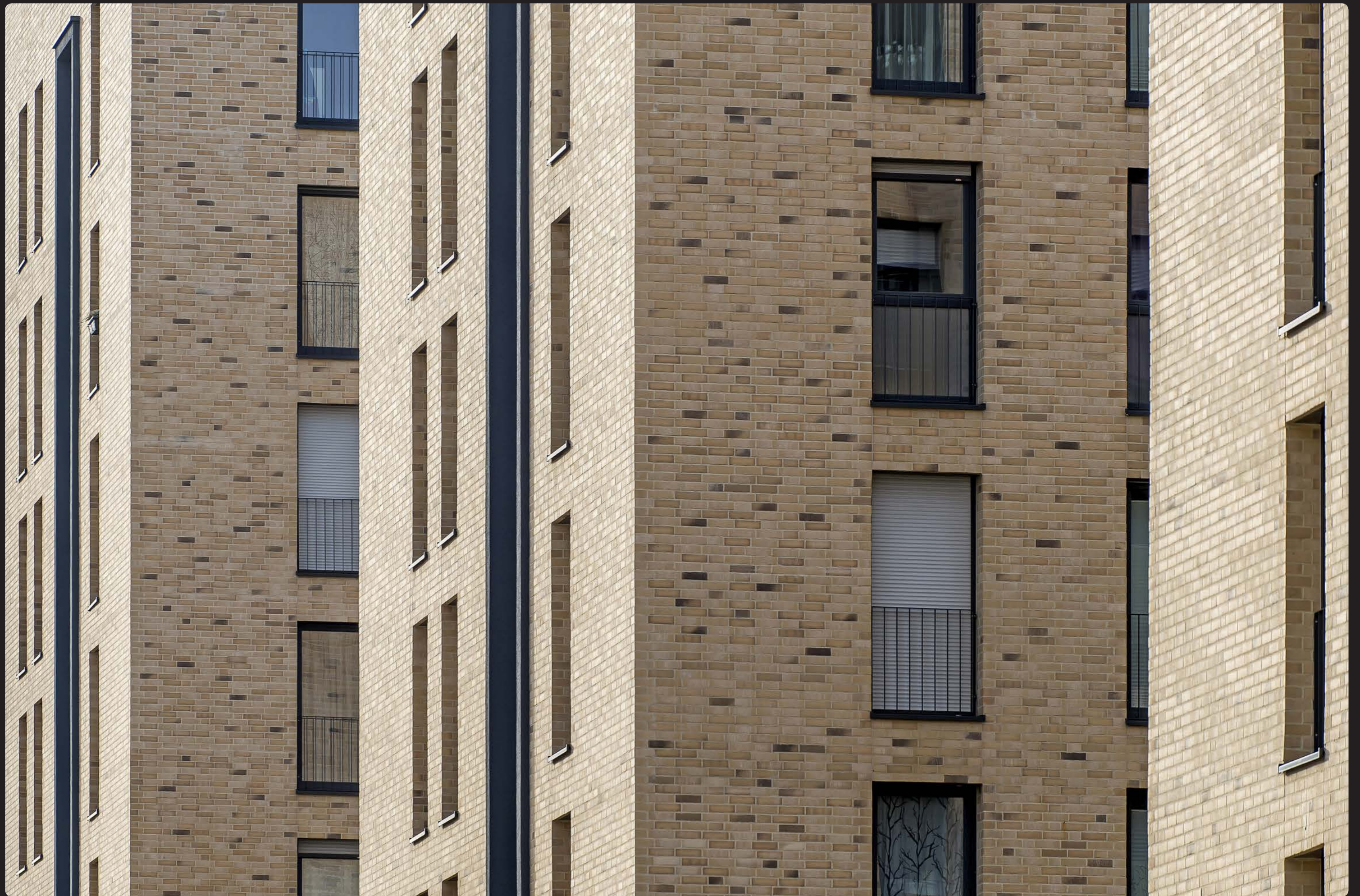


K 948 DF

K 941 DF

K 947 DF

K 947 NF



SINTRA



K 663 NF



K 663 NF



K 685 NF



K 685 NF



K 689 NF



K 689 NF



K 690 NF



K 658 NF





K 663 NF

K 685 NF



K 690 NF

K 658 NF



SINTRA



K 686 NF



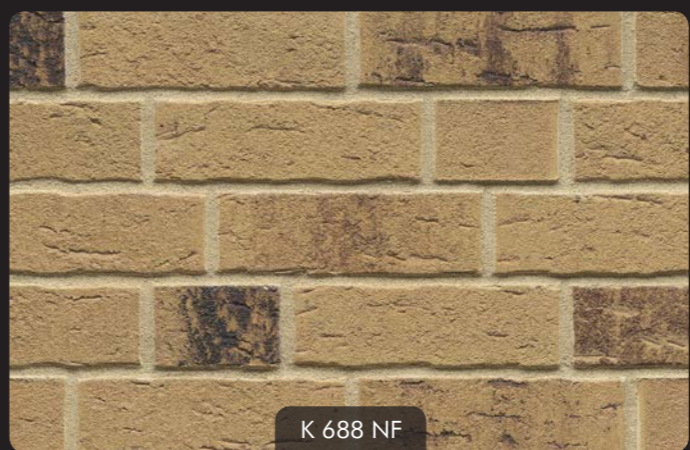
K 686 NF



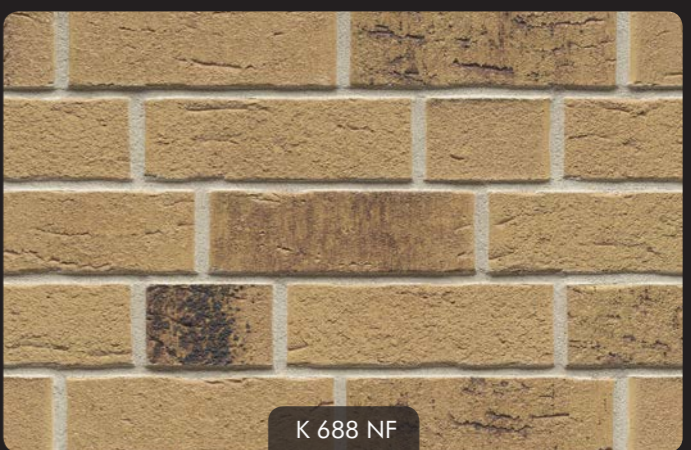
K 684 NF



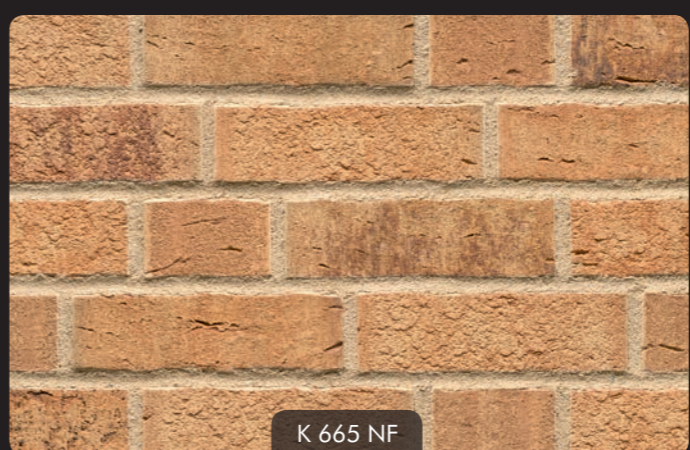
K 684 NF



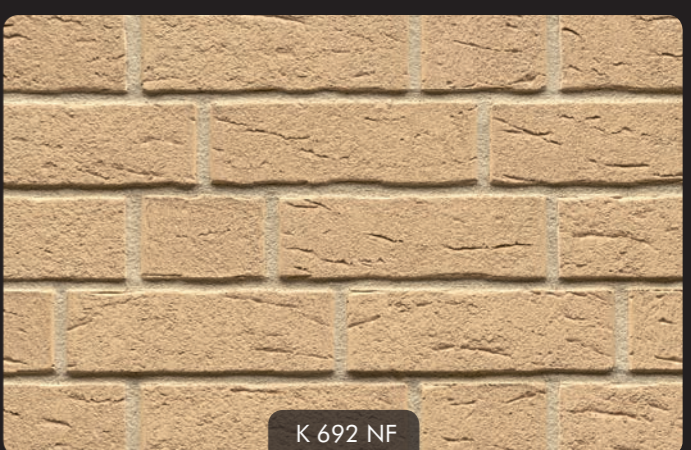
K 688 NF



K 688 NF

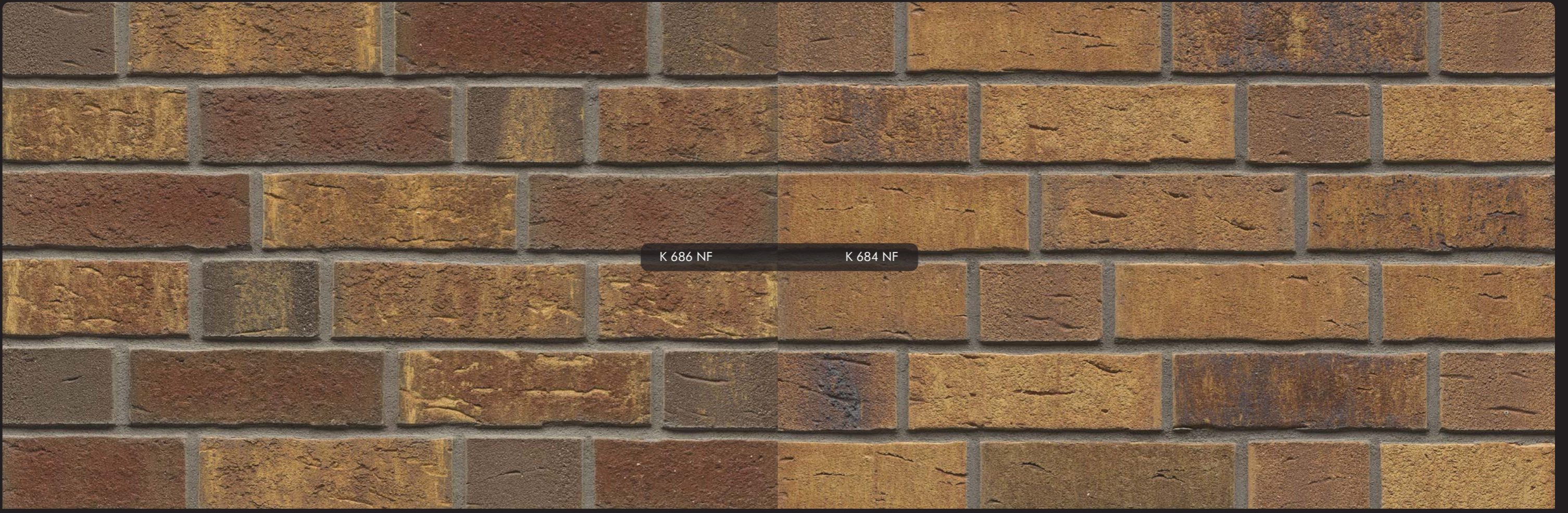


K 665 NF



K 692 NF

Die Abbildungen zeigen unverbindliche Durchschnittsmuster.
The images show non-binding average samples.



K 686 NF

K 684 NF



K 688 NF

K 665 NF

CLASSIC



K 366 NF



K 300 NF



K 335 NF



K 345 NF



K 377 NF



K 435 NF



K 440 NF



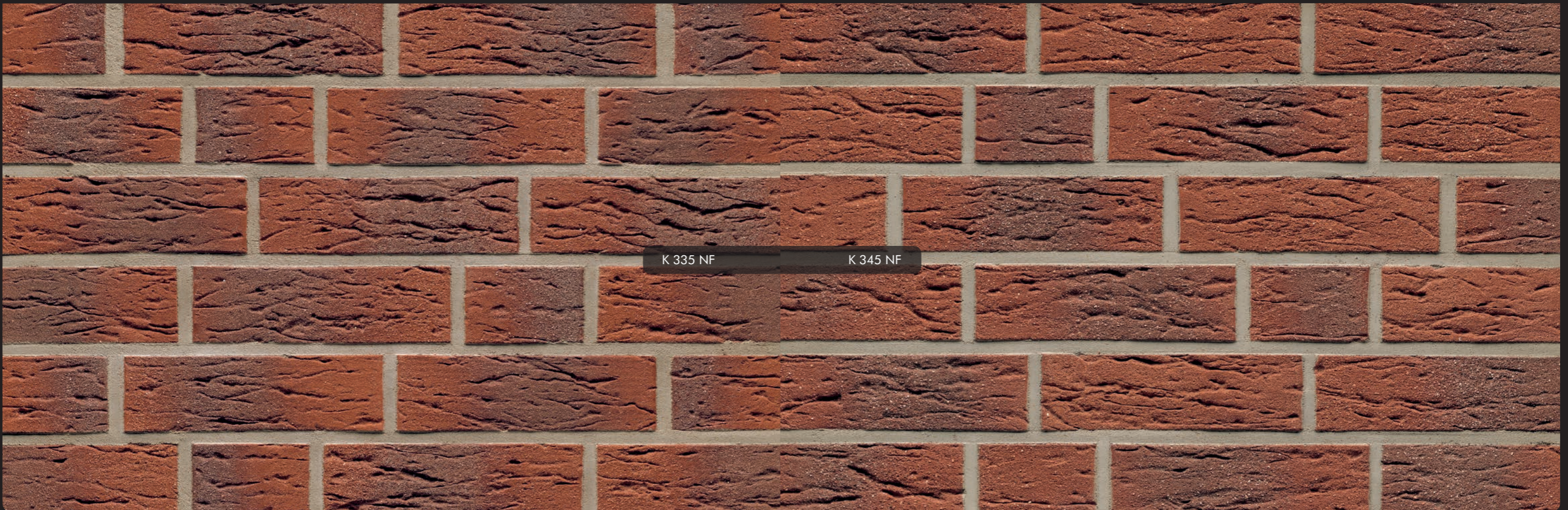
K 400 NF





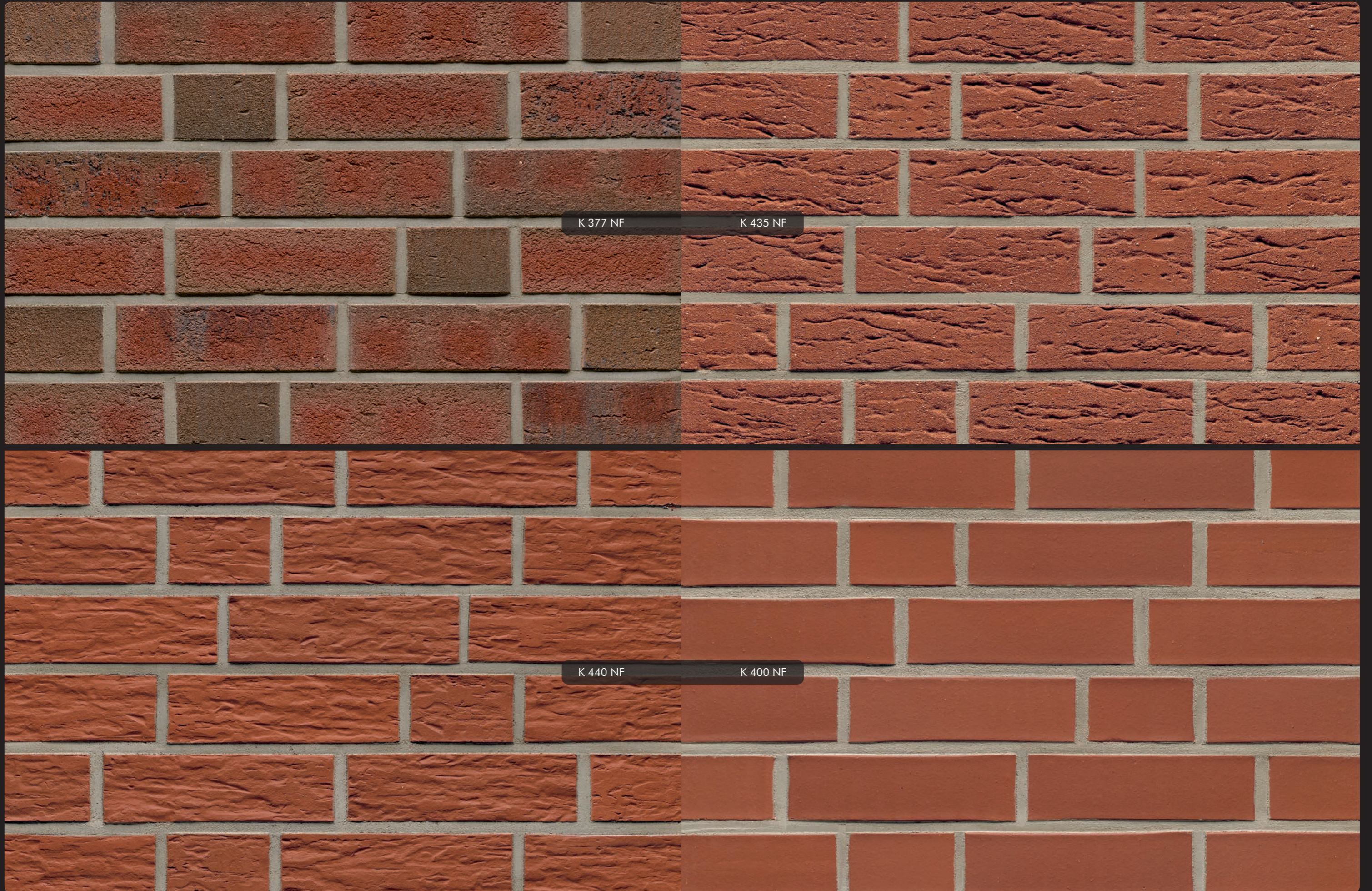
K 366 NF

K 300 NF



K 335 NF

K 345 NF



K 377 NF

K 435 NF

K 440 NF

K 400 NF



CARBONA



K 570 NF



K 560 DF



K 560 NF



K 560 NF



Die Abbildungen zeigen unverbindliche Durchschnittsmuster.
The images show non-binding average samples.



K 570 NF

K 560 DF

K 560 NF

K 560 NF

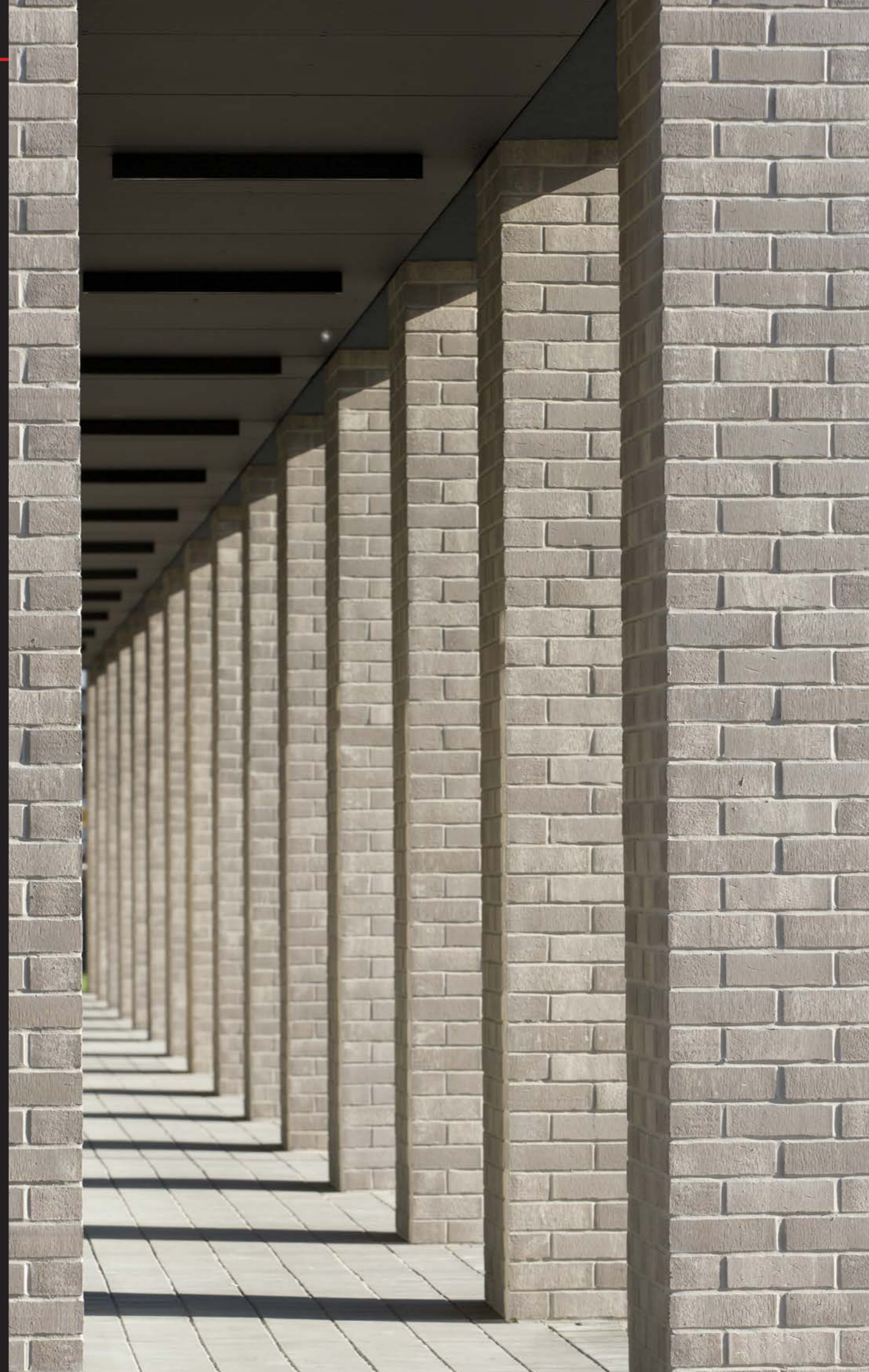
BACCO



K 991 DF



K 911 NF



ACCUDO

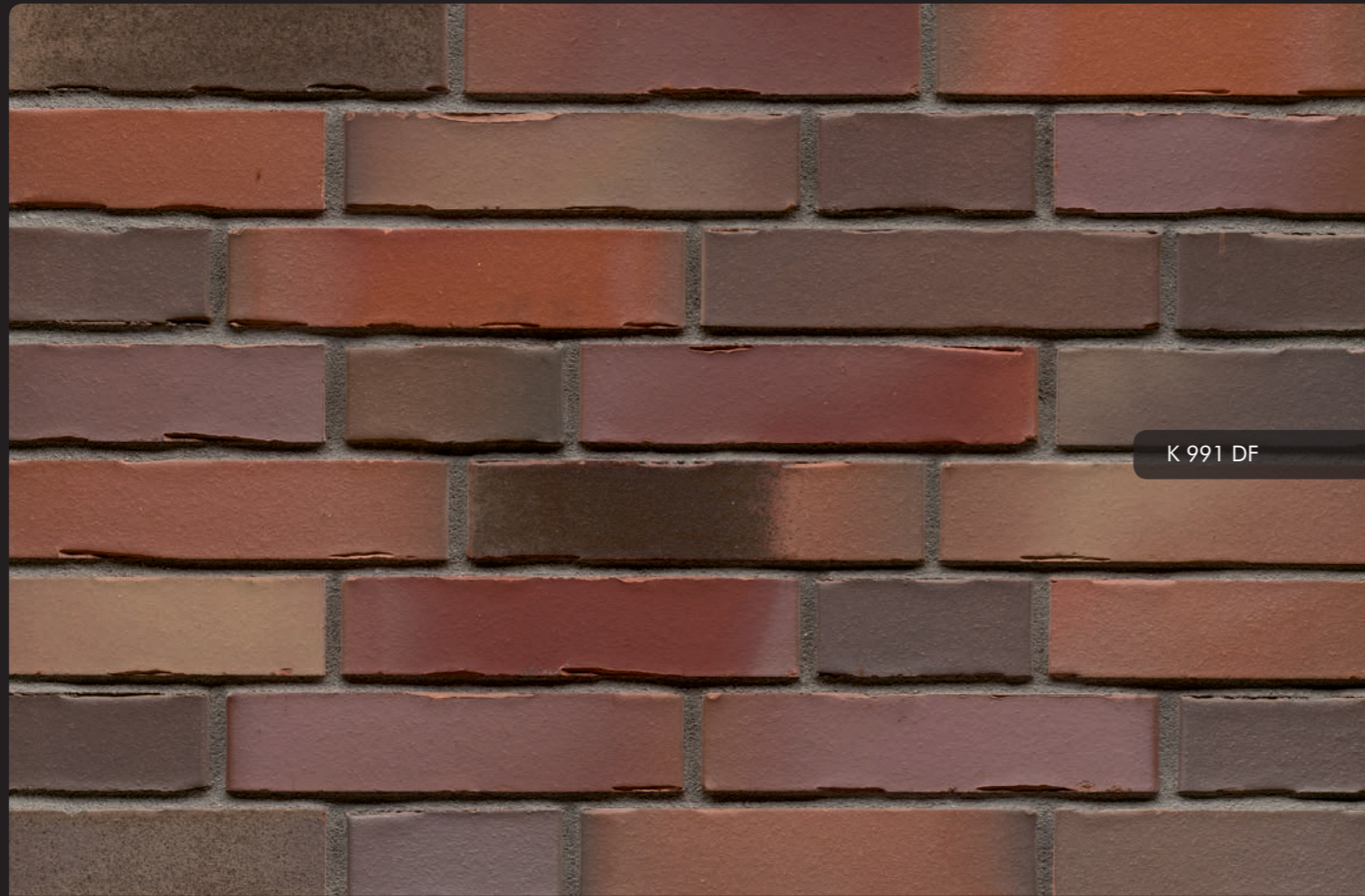


K 704 NF



K 707 NF

Die Abbildungen zeigen unverbindliche Durchschnittsmuster.
The images show non-binding average samples.



K 991 DF



K 704 NF

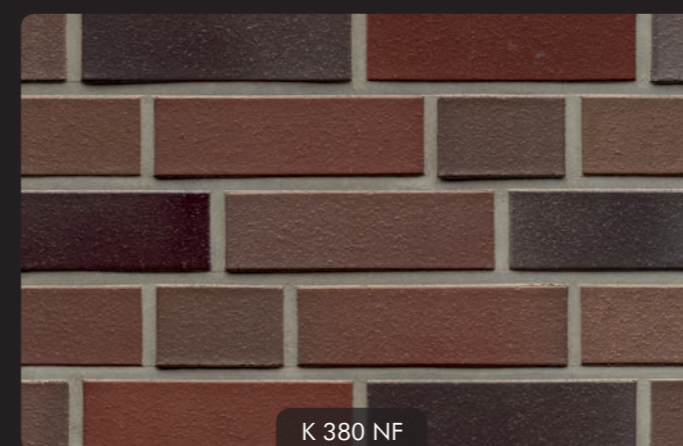
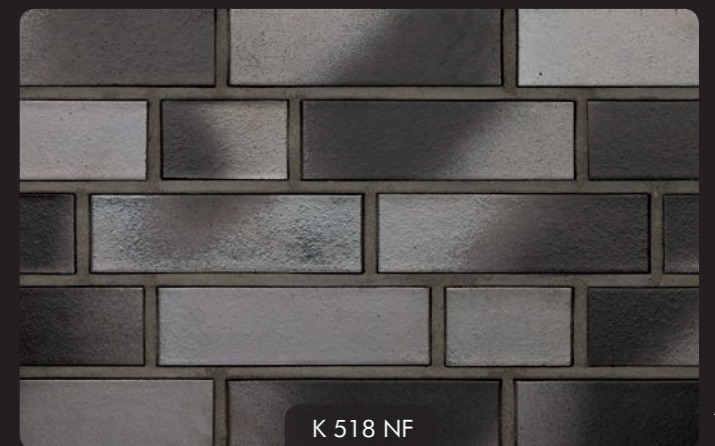


K 991 NF



K 707 NF

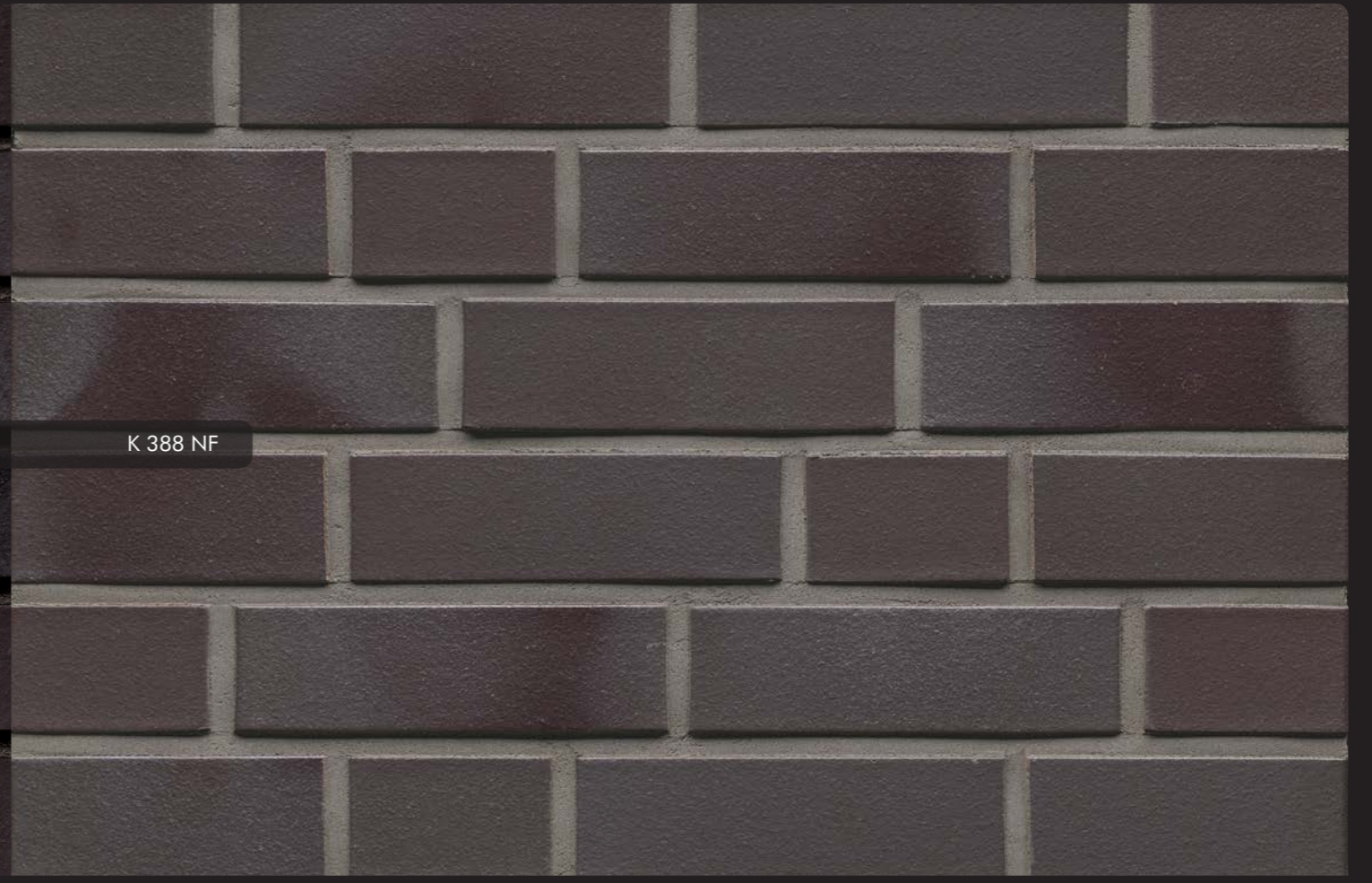




Die Abbildungen zeigen unverbindliche Durchschnittsmuster.
The images show non-binding average samples.



K 508 NF



K 388 NF



K 518 DF



K 518 NF



K 380 NF

K 350 NF



Ärztehaus II am KLINIKUM

Klinikum Göttingen
Hauptgang
Chirurgische und
BG-Sprechstunde
Mitarbeiter
Nahverkehrs-
07:00 - 18:00 Uhr
Ärztchen I

Ärztchen I
Alte Amme
Klinikum
Göttingen



DATEN UND FAKTEN

FACTS AND FIGURES

140 MITARBEITER EMPLOYEES



ÄLTESTES KLINKERWERK DEUTSCHLANDS
 FAMILIENGEFÜHRT IN DER 4. UND 5. GENERATION
 BETRIEBSGELÄNDE CA. 17 HA
 ÜBERDACHTE PRODUKTIONSFLÄCHE CA. 6 HA
 GERMANY'S OLDEST BRICK FACTORY
 FAMILY-OWNED IN THE 4TH AND 5TH GENERATION
 FACTORY PREMISES APPROX. 17 HA
 PRODUCTION AREA INDOOR APPROX. 6 HA

2.500 ARTIKEL PRODUCTS

-  KLINKERRIEMCHEN
THIN BRICKS
-  VERBLENDKLINKER
FACING BRICKS
-  PFLASTERKLINKER
CLAY PAVERS

ÜBER 41 LÄNDER
 WELTWEITE VERMARKTUNG

MORE THAN 41 COUNTRIES
 SALES WORLDWIDE

OSNABRÜCK



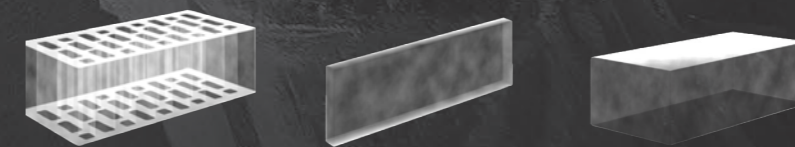
BIELEFELD



MÜNSTER



FELDHAUS KLINKER
 BAD LAER
 NORDRING 1



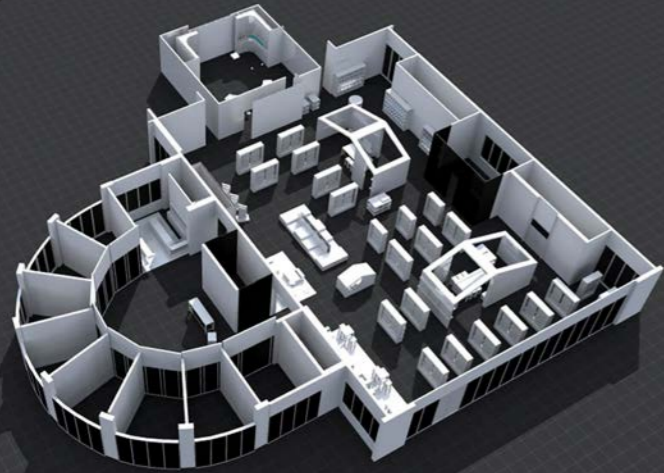
115 MILLIONEN

KLINKERRIEMCHEN, VERBLENDKLINKER UND PFLASTERKLINKER IM JAHR.
 PRODUKTION VON TÄGLICH CA. 360 T GEBRANNTEM MATERIAL

115 MILLION

BRICK SLIPS, FACING BRICKS AND CLAY PAVERS PER YEAR.
 DAILY PRODUCTION APPROX. 360 T FIRED RAW MATERIAL

SHOWROOM



2.500 EXPONATE EXHIBITS
SHOWROOM 1.400 QM SQM

EINE DER GRÖSSTEN AUSSTELLUNGEN DER BRANCHE –
AUCH ERGÄNZENDE BAUSTOFFE.
ONE OF THE BIGGEST EXHIBITIONS IN THE INDUSTRY –
ALSO COMPLEMENTARY MATERIALS.

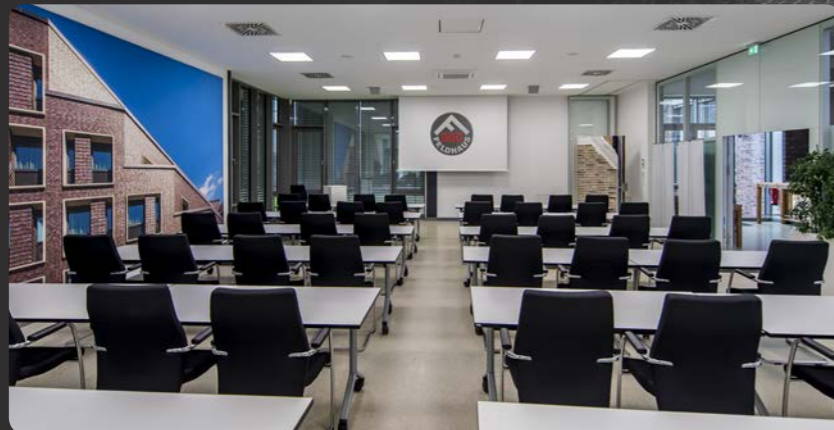


FACHBERATUNG SPECIALIST COUNSELING

IHR ANSPRECHPARTNER FÜR IHRE PLANUNGEN
MAIK LANDWEHR
+49 (0)5424 2920-0
YOUR CONTACT PERSON FOR YOUR PLANNING
MAIK LANDWEHR
+49 (0)5424 2920-0



FACHVERANSTALTUNGEN & HAUSMESSEN WORKSHOPS & IN-HOUSE-EXHIBITIONS



CREATIVE LOUNGE - KONFIGURATOR CUSTOMIZER



9 BIS 18 UHR
9 AM TO 6 PM

MONTAG BIS FREITAG GEÖFFNET
SOWIE SAMSTAG VON 9 BIS 13 UHR.
TERMINRESERVIERUNG FÜR BERATUNG:
+49 (0)5424 2920-0
MONDAY TO FRIDAY OPEN
AND SATURDAY FROM 9 AM TO 1 PM.
DATE RESERVATION FOR DETAILED ADVICE:
+49 (0)5424 2920-0



FELDHAUS KLINKER VERTRIEBS-GMBH
Nordring 1 · 49196 Bad Laer
Telefon +49 (0)5424 2920-0 · Telefax +49 (0)5424 2920-129
www.feldhaus-klinker.de · info@feldhaus-klinker.de

12/2018